

### Ratings Range – 60 Hertz Operation

Standby: kW 1004 - 1250  
kVA 1255 - 1563

Prime: kW 965 - 1125  
kVA 1206 - 1406

Baldor generators are available in a variety of power ratings and installation styles to meet the energy needs of the smallest businesses and the largest manufacturing facilities. All generator sets are designed to meet the specifications to ensure the fastest startup and dependable long-term operation. Rely on Baldor generators to provide the clean, quiet and environmentally friendly electrical power when you need it most. Emergency backup, standby, prime power, peak shaving or for any of your day or night electrical power needs, you can count on a dependable Baldor generator to provide the peace of mind and security you desire.

### Standby and Prime Power Features

- ✓ Heavy-duty industrial diesel engine that meets the latest EPA emissions levels
- ✓ Brushless synchronous alternators with dynamic balancing and four pole construction
- ✓ Fully featured microprocessor based controller that's easy to use and field programmable for customized installations
- ✓ Generator sets are prototype tested and production tested to ensure easy startup
- ✓ Gen-set accepts rated load in one step
- ✓ Heavy duty construction that's designed for use in prime or standby applications
- ✓ Manufactured in a dedicated and secure ISO-9001 certified facility
- ✓ Generator sets are backed by a world wide network of parts and service centers
- ✓ Optional agency approvals available including UL2200 and NFPA110
- ✓ Optional environmental enclosures available including weather resistant, sound attenuated, containerized, and walk-in models
- ✓ Full range of genset accessories and factory installed options available

### Genset Ratings

| Genset Model Number | Alternator | Voltage L-N / L-L | Phase | Hertz     | 150°C Rise Standby Rating |           | 125°C Rise Prime Rating |      |
|---------------------|------------|-------------------|-------|-----------|---------------------------|-----------|-------------------------|------|
|                     |            |                   |       |           | kW / kVA                  | Amps      | kW / kVA                | Amps |
| IDLC1250-2M         | PI734A-312 | 220/380           | 3     | 60        | 1004/1255                 | 1909      | 965/1206                | 1835 |
|                     |            | 240/416           | 3     | 60        | 1141/1426                 | 1982      | 1098/1373               | 1907 |
|                     |            | 254/440           | 3     | 60        | 1217/1521                 | 1998      | 1125/1406               | 1847 |
|                     |            | 277/480           | 3     | 60        | 1250/1563                 | 1882      | 1125/1406               | 1693 |
|                     | PI734A-07  | 347/600           | 3     | 60        | 1250/1563                 | 1505      | 1125/1406               | 1355 |
|                     | PI734B-312 | 220/380           | 3     | 60        | 1116/1395                 | 2122      | 1072/1340               | 2038 |
|                     |            | 240/416           | 3     | 60        | 1250/1563                 | 2171      | 1125/1406               | 1954 |
|                     |            | 254/440           | 3     | 60        | 1250/1563                 | 2053      | 1125/1406               | 1847 |
| 277/480             |            | 3                 | 60    | 1250/1563 | 1882                      | 1125/1406 | 1693                    |      |

**NOTES:** For ratings and voltages not listed above refer to the Genset Selector.  
Standby ratings do not have an overload capability but can be used for the duration of the utility failure per ISO-3046, DIN6271 and BS5514.  
Prime (Unlimited Running Time) ratings are continuous per DIN 6271 and ISO-3046 with 10% overload capacity.  
Baldor reserves the right to implement specifications or design changes without notice.

## Engine Application Data

### Engine Specifications

|  |                               |
|--|-------------------------------|
| Manufacturer                             | Mitsubishi                    |
| Engine Model #                           | S12R-Y2PTAW-1                 |
| Engine Type                              | 4 Cycle, 12 Cylinder          |
| Induction System                         | Turbocharged,<br>Inter Cooler |
| Displacement, L (in <sup>3</sup> )       | 49 (2992)                     |
| EPA Emissions Level                      | Tier 2                        |
| HP at Rated Speed BHP (kW <sub>m</sub> ) | 1881 (1403)                   |
| Rated RPM                                | 1800                          |
| Bore and Stroke in(mm)                   | 6.69 x 7.09 (170 x 180)       |
| Compression Ratio                        | 14.5:1                        |
| Air Filter Type                          | Dry                           |
| Governor Type/Model                      | Proact2                       |
| Governor Manufacturer                    | Woodward                      |
| Freq Reg NL to FL                        | Isochronous                   |
| Freq Reg Steady State                    | +/- 0.25%                     |

### Engine Lubrication System

|                         |              |
|-------------------------|--------------|
| Oil Pan Capacity gal(L) | 39.6 (150.0) |
| Oil Pan w/Filter        | 47.6 (180.0) |
| Oil Filter Quantity     | 4            |
| Oil Filter Type         | Cartridge    |
| Oil Cooler              | Water Cooled |
| Recommended Oil         | 15W-40       |
| Oil Press psi(kPa)      | 71 (490)     |

### Engine Cooling System

|  |               |
|--|---------------|
| Genset Max Ambient Temp °F(°C)                             | 113 (45)      |
| Engine Coolant Cap qt(L)                                   | 137.2 (129.8) |
| Engine + Radiator System Cap qt(L)                         | 538.0 (509.1) |
| Water Pump Type  | Centrifugal   |
| Coolant Flow gpm (Lpm)                                     | 489 (1850.9)  |
| Charge Cooler Flow gpm (Lpm)                               | 90 (340.7)    |
| Heat Rejected to Cooling Water<br>@ Rated kW; Btu/min (kW) | 29045 (510.5) |
| Heat Rejected to Charge Cooler<br>@ Rated kW; Btu/min (kW) | 29045 (510.5) |
| Heat Rejected to Ambient Air<br>@ Rated kW; Btu/min (kW)   | 6703 (117.8)  |
| Max Restriction of Cooling Air<br>inH <sub>2</sub> O(kPa)  | 0.5 (0.124)   |

### Engine Exhaust System

|   |                      |
|---|----------------------|
| Exhaust Manifold Type                     | Dry                  |
| Exhaust Flow @ Rated kW cfm(cmm)          | 12570 (365)          |
| Exhaust Temp (dry manifold) °F(°C)        | 934 (487)            |
| Max Back Pressure inH <sub>2</sub> O(kPa) | 23.6 (5.9)           |
| Exhaust Outlet Diameter in(mm)            | 11.97 (304)          |
| Exhaust Outlet Type                       | JIS300A (approx 12") |

### Engine Electrical System

|                              |          |
|------------------------------|----------|
| Charging Alternator Volts dc | 24       |
| Charging Alternator Amps     | 30       |
| Grounding Polarity           | Negative |
| Starter Motor Volts dc       | 24       |
| Battery Recommendations      |          |
| Battery Volts dc             | 24       |
| Min Cold Cranking Amps       | 1100     |
| Quantity Required            | 4        |

### Ventilation Requirements

|   |               |
|---|---------------|
| Cooling Airflow scfm(cmm)                     | 62160 (1761)  |
| Combustion Airflow cfm(cmm)                   | 4767 (135)    |
| Heat Rejected to Ambient                      |               |
| From Engine Btu/min(kW)                       | 6703 (118)    |
| From Alternator Btu/min(kW)                   | 3583 (63)     |
| Recommended Free Area Intake                  |               |
| Louver Size ft <sup>2</sup> (m <sup>2</sup> ) | 134.0 (12.45) |

### Engine Fuel System

|                           |               |
|---------------------------|---------------|
| Recommended Fuel          | #2 Diesel     |
| Fuel Line at Engine       |               |
| Supply Line Min ID in(mm) | 0.75 (19)     |
| Return Line Min ID in(mm) | 0.75 (19)     |
| Fuel Pump Type            | Engine Driven |
| Fuel Pump Max Lift ft (m) | 3 (1)         |
| Max Flow to Pump gph(Lph) | 126.6 (479.2) |
| Fuel Filter               |               |
| Secondary Filter          | 4 µm          |
| Secondary Water Separator | Not Included  |
| Primary Filter            | Optional      |
| Primary Water Separator   | Optional      |

### Fuel Consumption – Standby Rating

|                    |               |
|--------------------|---------------|
| 100% Load gph(Lph) | 103.3 (391.0) |
| 75% Load gph(Lph)  | 75.6 (286.1)  |
| 50% Load gph(Lph)  | 52.3 (198.0)  |
| 25% Load gph(Lph)  | 30.9 (117.0)  |

### Fuel Consumption – Prime Rating

|                    |              |
|--------------------|--------------|
| 100% Load gph(Lph) | 94 (355.8)   |
| 75% Load gph(Lph)  | 68.8 (260.4) |
| 50% Load gph(Lph)  | 47.6 (180.2) |
| 25% Load gph(Lph)  | 28.1 (106.4) |

### Engine Output Deratings - Standby

|                    |             |
|--------------------|-------------|
| Rated Temp         | 40°C        |
| Rated Altitude     | 1500 m      |
| Max Altitude       | 5000 m      |
| Temperature Derate | -5% / 10°C  |
| Altitude Derate    | -1% / 100 m |

## Alternator Specifications

|                     |                         |                             |                             |
|---------------------|-------------------------|-----------------------------|-----------------------------|
| Alternator Type     | 4-Pole, Rotating Field  | Automatic Voltage Regulator |                             |
| Exciter Type        | Brushless               | PMG                         | Std MX321                   |
| Excitation System   | PMG                     | Voltage Regulation          | No Load to Full Load        |
| Insulation          | per NEMA MG1            | PMG Regulator               | +/- 0.5%                    |
| Material            | Class H                 | Load Acceptance             | 100% of Rating,<br>One Step |
| Standby Temp Rise   | 150°C                   | Subtransient Reactance      |                             |
| Prime Temp Rise     | 125°C                   | 480V, Per Unit              | 16%                         |
| Lead Connection     | 6 Lead, Reconnectable   | TIF (1960 Weighting)        | <50                         |
| Stator Pitch        | 2/3                     | Line Harmonics              | 5% Maximum                  |
| Amortisseur Winding | Full                    | Motor Starting kVA          | 30% Max Voltage Dip         |
| Bearing             | Single, Double Shielded | Alt @ 480V SkVA             | PI734A-312 - 2700           |
| Drive Coupling      | Flexible Disk           | Alt @ 480V SkVA             | PI734B-312 - 3320           |
| Unbalanced Load     | 20% of Standby Rating   |                             |                             |

## Genset Controller Specifications

### Baldor IntelliGen NT Features

- Large back-lit graphical LCD Display  
64x128 pixel resolution
- Sealed Membrane Panel to IP65
- Push Buttons for Simple Control  
Start, Stop, Fault Reset, Horn Reset, Mode,  
Page, and Enter Keys
- Display Metering and Protection
  - Oil Pressure Warning / Shutdown
  - High/Low Coolant Temperature Warning
  - High Coolant Temperature Shutdown
  - Low Coolant Level Shutdown
  - Low Fuel Level Warning / Shutdown
  - Over Speed Protection
  - Battery Voltage Under/Over Warning
  - Running Hour Meter
  - Generator Under/Over Volts Warn/Shutdown
  - Generator Under/Over Freq Warn/Shutdown
  - Generator Over Current Shutdown
  - Generator Output Metering for V1-V3, I1-I3,  
Hz, kW, kWh, kVAR, kVAh
  - User Configurable Inputs and Outputs
  - Up to 500 Event Based History Records
  - Integrated PLC Programming Functions
  - Interface to Remote Display or  
Remote Annunciator
- Controller capable of Both Single or Multiple  
Gensets Operating in Standby or  
Parallel Modes

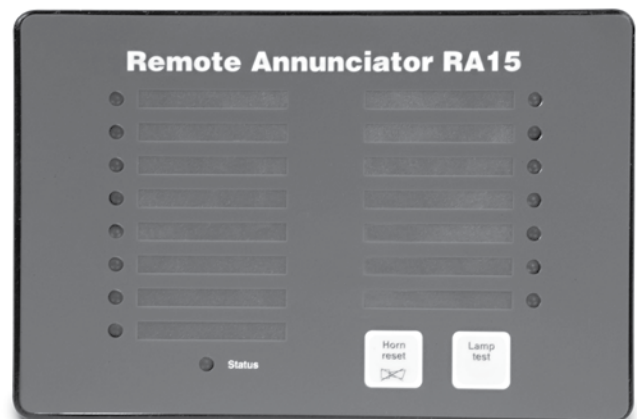


### NFPA110 Compliance

An optional Remote Annunciator is available to meet NFPA110 applications

### Remote Annunciator Features – RA15

- 15 LED Indicators with Function Labels
- Horn Reset and Lamp Test keys
- CAN Bus Connection for up to 600 Feet



## Additional Standard Genset Features

- ✓ Structural Steel Sub-Base
- ✓ Sub-Base Lifting Eyes
- ✓ Unit Mounted Radiator
- ✓ Radiator Mounted Fan
- ✓ Fan Guard
- ✓ Battery Charging Alternator
- ✓ Battery Rack and Cables
- ✓ Unit Mounted Control Panel
- ✓ Spin-On Filters for Oil and Fuel
- ✓ Enamel Finish
- ✓ One Set - Operation / Maintenance Manual
- ✓ Factory Tested Prior to Shipment
- ✓ Limited Warranty

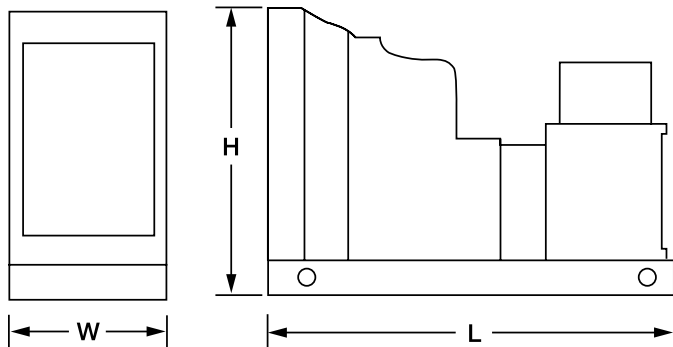
## Optional Agency Approvals

- UL2200 (Review Option Availability)
- NFPA110 (Request Remote Annunciator)

## Weight and Dimensions (Open Unit)

|                     |                         |
|---------------------|-------------------------|
| Weight – Wet lb(kg) | 26045 (11814)           |
| Overall Dimensions  | Length x Width x Height |
| inches              | 212 x 93 x 108          |
| mm                  | 5385 x 2362 x 2743      |

Note: Drawing is provided for reference only. Use engineering outline for installation planning



## Available Accessories and Options

### Open Unit

- Industrial Silencer
- Residential Silencer
- Critical Silencer
- Super Critical Silencer
- Exhaust Flex Pipe
- Rain Cap
- Radiator Duct Flange

### Enclosed Units

- Weather Resistant Enclosure
- Sound Attenuated w/Internal Critical Silencer
- ISO Container
- Walk-In Enclosure

### Alternator Accessories

- PMG Exciter and AVR Upgrade
- Alternator Space Heater
- Exciter Field Circuit Breaker
- Alternator Drip Shield

### Genset Accessories

- Voltage Adjust Potentiometer
- Starting Battery
- Battery Charger  Auto/Float
- Auto/Float Equalize Timer  Manual  Automatic
- Battery Heater
- Engine Coolant Heater
- Oil & Coolant Drain Valves (Engine/Radiator)
- Oil & Coolant Drain Extended to Base
- Main Output Breaker  Wall Mount  Unit Mount
- Transfer Switch  Manual  Automatic

### Control Panel

- Remote Annunciator
- Remote Communications
- Remote E-Stop

### Fuel System and Sub-Base Fuel Tank

- Sub-Base Tank  Single Wall  Double Wall
- UL142 Double Wall with Containment
- Tank Run Time @ 100% Load
  - 12-16 Hours
  - 24-36 Hours
- Flex Fuel Line
- Primary Fuel / Water Separator

### Vibration Isolators

- Location  Under Tank  Between Tank
- Elastomer Isolator
- Pad Isolator
- Standard Spring
- Spring for Seismic Zone 4

**BALDOR**  
**GENERATORS**  
 WORLD HEADQUARTERS

Baldor Electric Company • P. O. Box 2400 • Fort Smith, AR 72902-2400 U.S.A.  
 Phone (479) 646-4711 • Fax (479) 648-5792 • International Fax (479) 648-5895

www.baldor.com